

OSHER LIFELONG  
LEARNING INSTITUTE  
AT THE UNIVERSITY OF MICHIGAN  
2016-17 SERIES



*Mona Hanna-Attisha*



*Jeffrey Kutcher*



*Michael W. Traugott*



*Jocelyn Benson*



*Victor Lieberman*

# *Distinguished*

SESSION 1

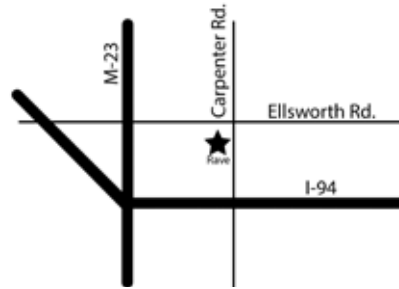
LECTURE

SERIES

# NEW FOR 2016-2017!

The Distinguished Lecture Series or DLS for 2016-2017 will expand from 9 lectures to 10 lectures. We will have two DLS brochures, one for Session 1 which will be from September to January and a second one for Session 2 running from February to June.

**Time:** 10:00 – 11:30 a.m.  
**Location:** Rave Cinema  
4100 Carpenter Road,  
Ypsilanti, MI 48197  
near corner of East Ellsworth Road



Park in area C3, D3 or E3. Enter the unmarked door on the north side. Look for yellow signs: "OLLI lectures here."

**Fee(s):** \$25/5-lecture series or \$50/10-lecture series (or \$10 per lecture, payable at the door; checks preferable)  
\$20 for the Annual Membership Fee (effective from September 1, 2016 - August 31, 2017)

On-line registration will be available starting August 24 at 9:30 a.m.; or send registration form and payment to:  
OLLI at U of M

2401 Plymouth Rd., Suite C, Ann Arbor, MI 48105

If you have questions: Phone: 734-998-9351  
Website: [www.oli-umich.org](http://www.oli-umich.org)  
Email: [oli.info@umich.edu](mailto:oli.info@umich.edu)

On-line registration at [oli-umich.org](http://oli-umich.org) will be available August 24 at 9:30 a.m. and thereafter if you prefer to use our on-line services, making payment by credit card. You may also use this mail-in/drop-off form to pay annual membership fees and/or register for lecture series by check. Mail-in/drop-off registrations can be made at any time but will not be opened until August 24 at 9:30 a.m.

For more information, e-mail: [oli.info@umich.edu](mailto:oli.info@umich.edu), or call: (734) 998-9351.

**SPECIAL OFFER: SAVE \$35!** For your convenience, you may add all 30 Themed Thursday Lectures (Sept. to May) to the Distinguished Lecture Series by increasing the amount of your payment from \$50 to \$165 for all lectures.

## MEMBERSHIP and REGISTRATION PAYMENTS

To receive notices and participate in activities of the Osher Lifelong Learning Institute, *each person* must pay an annual fee of \$20.  
*Annual memberships are from September 1st to August 31st.*

Name(s) of member(s): (1) \_\_\_\_\_ (2) \_\_\_\_\_

[ ] \$20 for 2016-17 membership fee(s) = \$ \_\_\_\_\_ [ ] \$20 for 2016-17 membership fee(s) = \$ \_\_\_\_\_

[ ] \$25 for Distinguished Lecture Series Session 1 = \$ \_\_\_\_\_ [ ] \$25 for Distinguished Lecture Series Session 1 = \$ \_\_\_\_\_

[ ] \$50 for All Distinguished Lecture Series = \$ \_\_\_\_\_ [ ] \$50 for All Distinguished Lecture Series = \$ \_\_\_\_\_

[ ] \$165 for All Lecture Series = \$ \_\_\_\_\_ [ ] \$165 for All Lecture Series = \$ \_\_\_\_\_

Total \$ \_\_\_\_\_

Street address(es) \_\_\_\_\_

City/state/zip for each \_\_\_\_\_

Member #1 telephone: (\_\_\_\_\_) \_\_\_\_\_ Member #1 e-mail: \_\_\_\_\_

Member #2 telephone: (\_\_\_\_\_) \_\_\_\_\_ Member #2 e-mail: \_\_\_\_\_

**Each member's e-mail address is needed for each person to have full access to our on-line registration system.**

**FOR CHECK-WRITING AND MAILING INFORMATION, PLEASE SEE ABOVE INFORMATION.**

*If only interested in a few lectures, please plan to pay at the door.*



# Can One Person Really Change the World?

Join us for the  
Osher Lifelong Learning Institute at the  
University of Michigan's  
**2016 Kick Off Event with Tom Clynes**

*Thursday, September 8,  
10 a.m. — Noon*

**Kensington Court Hotel**  
**610 Hilton Blvd., Ann Arbor**  
(south surface drive of Briarwood Mall)

**Meet old and new friends.**  
**Learn about OLLI 2016-2017.**  
**Enjoy refreshments!**

Info: [olli.info@umich.edu](mailto:olli.info@umich.edu) or (734) 998-9351.

*Five lucky attendees  
will receive a copy  
of Tom Clynes'  
The Boy Who Played  
with Fusion,  
which was shortlisted  
for the 2016  
PEN/E.O. Wilson  
Literary Science  
Writing Award.*

September 13, 2016

## THE FUTURE FOR FLINT'S CHILDREN Mona Hanna-Attisha

Dr. Mona Hanna-Attisha is Director, Pediatric Residency Program at Hurley Medical Center, Assistant Professor Pediatrics and Human Development, Michigan State University College of Human Medicine. One year ago, Dr. Mona Hanna-Attisha held a press conference announcing the results of her research which indicated that a number of Flint children had elevated blood-lead levels which had nearly doubled since water began to be drawn from the Flint river. Since then this pediatrician has devoted much of her practice to the evaluation of the impact of this lead exposure. Interventions will include maternal and infant support, improved pre-school and school health services as well as nutrition services. She will identify and discuss the problems that these children face and suggest some solutions to address these problems. Pre-registration highly recommended.

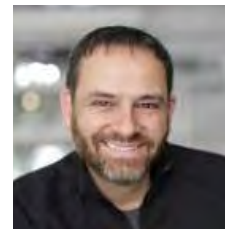


*Mona Hanna-Attisha*

October 11, 2016

## SPORTS CONCUSSION AND ATHLETE BRAIN HEALTH Jeffrey Kutcher

Dr. Jeffrey Kutcher is the National Director of The Sports Neurology Clinic, specializing in the treatment of sports concussion and other neurological disorders in athletes. He serves as a team physician for the US Ski and Snowboard Association, directs the NBA concussion program, and works as an advisor to the NFL and NHL Players Associations. He led the effort to create the Sports Neurology section of the American Academy of Neurology and served as the section's first chair. He also co-directs the annual Sports Concussion Conference for the American Academy of Neurology. Dr. Kutcher's presentation will provide an understanding of the complex issues of athlete brain health from youth sports to professional athletes, and everyone in between. In addition, attendees will gain a broad perspective of both the health risks and benefits of playing all types of sports.



*Jeffrey Kutcher*

November 15, 2016

## WHAT HAPPENED LAST TUESDAY Michael W. Traugott

The presidential election of 2016 is proving to be one of the most critical and challenging in recent memory. Results will determine the composition of the U.S. Senate and House of Representatives and will influence the future composition of the U.S. Supreme Court. It will undoubtedly change the face of both major political parties. Professor Emeritus Michael Traugott will talk about the November election outcomes---including the campaigns, primaries and caucuses. Traugott has studied mass media impact on American policies. He has a particular interest in the use of surveys and polls and how they are used to cover campaigns and elections. Recently retired, he is now Professor Emeritus of Communication Studies and Professor Emeritus of Political Science in the College of Literature, Science and the Arts as well as Research Professor Emeritus of Political Studies and an Adjunct Research Professor in the Center for Political Studies in the Institute of Social Research.



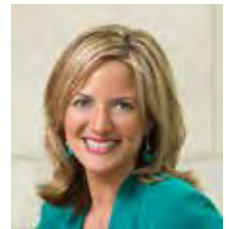
*Michael W. Traugott*

December 13, 2016

## DEMOCRACY UNDER SIEGE: PROMOTING PEOPLE'S VOICES IN OUR 2016 DEMOCRATIC PROCESS

Jocelyn Benson

Jocelyn Benson has served as Dean of Wayne State University Law School in Detroit since 2012. She graduated magna cum laude from Wellesley College (B.A.), earned a Master's degree at Magdalen College, Oxford, in the U.K. (M.Phil). She received her J.D. from Harvard University Law School. Upon graduation, Benson moved to Detroit to serve as law clerk to Honorable Damon J. Keith on the U.S. Court of Appeals for the Sixth Circuit. This presentation will cover the many legal and policy changes over the past decade that impact our citizens' ability to be engaged and informed. It will include Citizens United and campaign reform, redistricting and voting rights.



Jocelyn Benson

January 10, 2017

## ANTI- SEMITISM: WHAT HAS CHANGED SINCE 1945

Victor Lieberman

Victor Lieberman is the recipient of the 2014 Golden Apple Award, an annual award granted by students for the best teacher at the University of Michigan. He graduated first in his class from Yale University and received his doctorate from the University of London. His course on the History of the Arab-Israeli Conflict is one of the largest at the University of Michigan. He presents contrasting viewpoints for Arabs and Israelis with equal sympathy for each party. His books have also won prizes from the Association for Asian Studies and the World History Association. The chief journal of history, *The American Historical Review*, has described his recent two-volume study, *Strange Parallels*, as the most important work of history produced so far this century. He will compare anti-Semitism in Europe, particularly in the late 19th and early 20th centuries, with contemporary expressions around the world of anti-Semitism and anti-Zionism.



Victor Lieberman

# Distinguished

SESSION 2 LECTURE SERIES

Save  
the  
Date

February 14, 2017

March 14, 2017

April 11, 2017

May 9, 2017

June 13, 2017

### POLICIES

- On days when Ann Arbor Public Schools close because of inclement weather, all Osher Lifelong Learning Institute activities are also suspended – including lectures. To verify that the inclement weather policy is in effect, call (734) 998-9351 for a recorded message.
- Osher Lifelong Learning Institute at the University of Michigan reserves the right to substitute speakers.

This lecture series was made possible by volunteer efforts of Al Gourджи (Chair), Rolf Amsler, Twila Deigert, Ron Frisch, Bill Furtwangler, Cathy Marcus, Ed Marcus, Bette Michael, Bob Shaw, Leo Shedden, and Marie Vitale.



**M** UNIVERSITY OF MICHIGAN

2401 Plymouth Rd., Suite C  
Ann Arbor, MI 48105